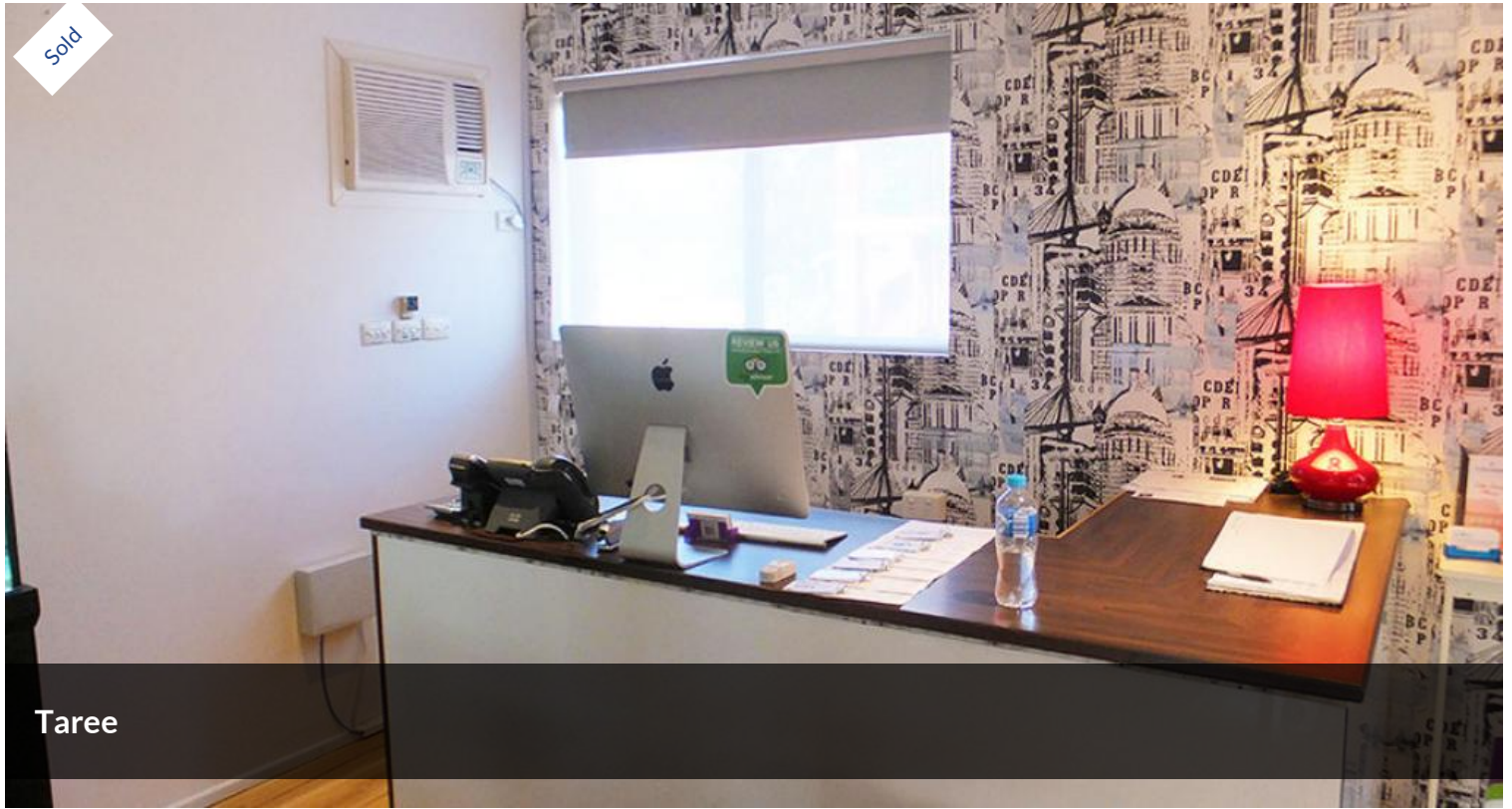


Sold



Taree



1289ML - The Perfect Motel near the Coast

- 20 well maintained and renovated rooms of various configurations.
- A long lease in place.
- Large renovated four-bedroom residence.
- Close to the river and a 30 minute drive to beaches.
- Presents well with several recent improvements.

The perfect motel. A coastal country leasehold property with a long lease remaining with a reasonable rent component. This recently renovated motel is a very neat and tidy, well maintained property in the town of Taree, a traditionally strong motel town.

Within 30 minutes to fabulous beaches and offering guests generous sized rooms with most having a courtyard area allowing flow through ventilation. With many systems now in place and with a good web

Price	SOLD
Property Type	Business

Agent Details

David Head - 0438 663 551

Office Details

Beecroft

34 Lamorna Ave Beecroft NSW

2119 Australia

1300 512 566

TOURISM  **BROKERS**

exposure the future expectation of this motel is very positive. There will be very little to spend on repairs and maintenance for many years.

The motel also offers a large renovated four-bedroom residence including a separate living/lounge area downstairs adjoining reception. A delightful pool and barbeque area completes the package. With a choice of private and public schools in the area, this property would also suit a family.

Net profit \$141,577 for 2016 calendar year

Contact Warren Sweetman from Tourism Brokers for further information or to arrange an inspection.

Property ID: 1289ML (quote when enquiring)

Location: One of the major towns on the rivers of the NSW Mid North Coast, Taree is idyllically situated on the Manning River 317 km north-east of Sydney with the Pacific Highway running right through the town. It is a big, modern, attractive town servicing the surrounding rural industries and driven by the tourists and travellers who pass through the town. It is located 16km inland from the mouth of the Manning River and consequently has tended to develop more as a service centre and stopover point than as an actual tourist destination.

Today Taree is a successful rural centre sustained by a wide range of activities including dairying, a timber industry, leather goods and engineering works. Taree CBD, centered along Commerce Street, together with shopping centre development to the west, provides a broad range of retail and commercial facilities. The town has a full complement of community facilities including a hospital and rail and airport access. The town also serves as a regional centre for other coastal towns in the Great Lakes Shire, being Forster and Tuncurry, approximately 35km to the south-east.

The above information provided has been furnished to us by the vendor/s. We have not verified whether or not that information is accurate and do not have any belief in one way or the other in its

accuracy. We do not accept any responsibility to any person for its accuracy and do no more than pass it on. All interested parties should make and rely upon their own inquiries in order to determine whether or not this information is in fact accurate.